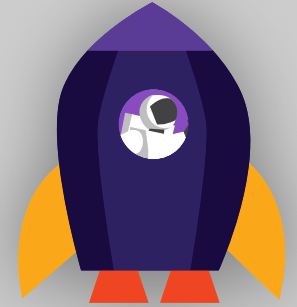




Kahoot!
Certified for
schools



Data-driven instruction

Welcome to Kahoot!'s Advanced Certification course on insights-driven instruction, with our special guest host, Jack Quinn! Before we get started, please don't share these guides further as they are only for those getting certified! :)

After you complete this course, you'll achieve the following learning objectives:

1. Learn which questions to have in mind when looking at kahoot results
2. Learn how to apply these questions for teacher intervention and instruction
3. How to access and use analytics in Kahoot! reports for further instruction

After you review the course material, you'll be ready to take the assignment via our app in order to receive your exclusive badge.

In order to complete the course assignment, you'll need to download the Kahoot! app to your iOS or Android device. You can find it in the [App Store](#) or on [Google Play](#).

Here's a reminder of how to open a Kahoot! challenge with the assignment:

1. After downloading the Kahoot! app to your mobile device, **log in** to your Kahoot! account - we need this info to be able to send you your diploma and badge!
2. When prompted to open the assignment challenge, **click the**

URL to open the challenge in-app, or enter the PIN manually

3. You'll then be able to **accept the challenge** and play the assignment, which is structured as a multiple-choice kahoot. You can do the assignment in short rounds, taking breaks in between, or all at once.

Data-driven instruction



Kahoot! goes beyond being a fun motivation for students to study or reward - with it, you can capture useful instructional insights for formative assessment.

Logic Gates				
Q4	This symbol is for the _____ gate.			
Correct answers	Xor			
Players correct (%)	85.71%			
Question duration	20 seconds			
Answer Summary				
Answer options	And	Or	Not	Xor
Is answer correct?	X	X	X	✓
Number of answers received	0	0	1	8
Average time taken to answer (seconds)	0.00	0.00	5.50	5.30
Answer Details				
Players	Answer	Score (points)	Current Total Score (points)	Answer time (seconds)
Cameron	✓ Xor	1233	4191	2.89
Destiny ??	X Not	0	1814	5.50
Darius	✓ Xor	874	1783	5.05
KJ ??	✓ Xor	1018	2729	3.29
christian	✓ Xor	928	2743	6.89
lenaJ	✓ Xor	1110	4014	7.82
??Kevon??	✓ Xor	844	2735	6.25

Which questions should analytics answer?

Kahoot! goes beyond being a fun motivation for students to study or reward - with it, you can capture useful instructional insights for formative assessment. Yet how can you make the most out of all the analytics in Kahoot! reports to better target and direct your instruction?

Start by asking these core, high-level questions to map out what you want your Kahoot! report to answer.

When looking at the analytics...

1. Did many of my students make the **same** mistake?
2. If so, why?
3. Do new analytics support that reason from number 2?
4. Are we getting better at choosing the right answer to problems like these?

How to apply these questions when instructing

How do you take the top-level questions from above and apply them to your instruction? Follow this step by step guide.

Step 1

Look for kahoot questions where there is a lot of student misunderstanding - a good benchmark is a question where 20% or more students got the wrong answer

Step 2

Find out...

- ▶ Are students making the same mistakes in a kahoot?
- ▶ Next, test your assumption of the common mistake - via mini-lessons, quizzes, or by assigning student-paced challenges for homework

Take informal steps to test your assumption, e.g. ask students what they liked about the answer they chose, what evidence suggests that answer might not be right, or what evidence might cause someone to doubt this answer.

The goal is to identify the common misunderstanding, whether that be part of the structure of the question (such as remembering to choose any of the correct options or only the false option) or a conceptual misunderstanding. If you find yourself explaining multiple questions on the same subject, this is good evidence to support re-teaching a whole group or for a small group of students, depending on how widely held the misunderstanding was.



Kahoot! Certified for schools

Data-driven instruction

Step 3

The focus is now on experimentation and remediation actions - trying out solutions and measuring if they work or not. In response to the student feedback gathered in previous steps, take some minutes to go through the big clues to understand the focus of the question, as well as which key points from instruction or class activity helped students remember the information needed to decide between answer choices. I.e., from the students' perspective - given the focus of this question and what they know, why do they think each answer choice is correct or incorrect?

Sometimes this simple explanation is enough, and if you plan to build in another similar question into the kahoot, you can see growth just by comparing scores from earlier questions to later questions.

However, sometimes, the root cause of misunderstanding will be elusive. As an educator, you can go through multiple cycles of attempted remediation and assessment, looking for signs of student progress. This is not uncommon!

Step 4

The final step is to understand what your next formal assessment should answer. After playing a kahoot and going through the report insights, take the most common misunderstandings and thread them into the next kahoot to see the effectiveness of your explanation and assess class progress.

This helps me keep my review efficient and ensure students have multiple opportunities to grapple with difficult problems.



Kahoot! Certified for schools

Data-driven instruction

Exploring insights in Kahoot! reports

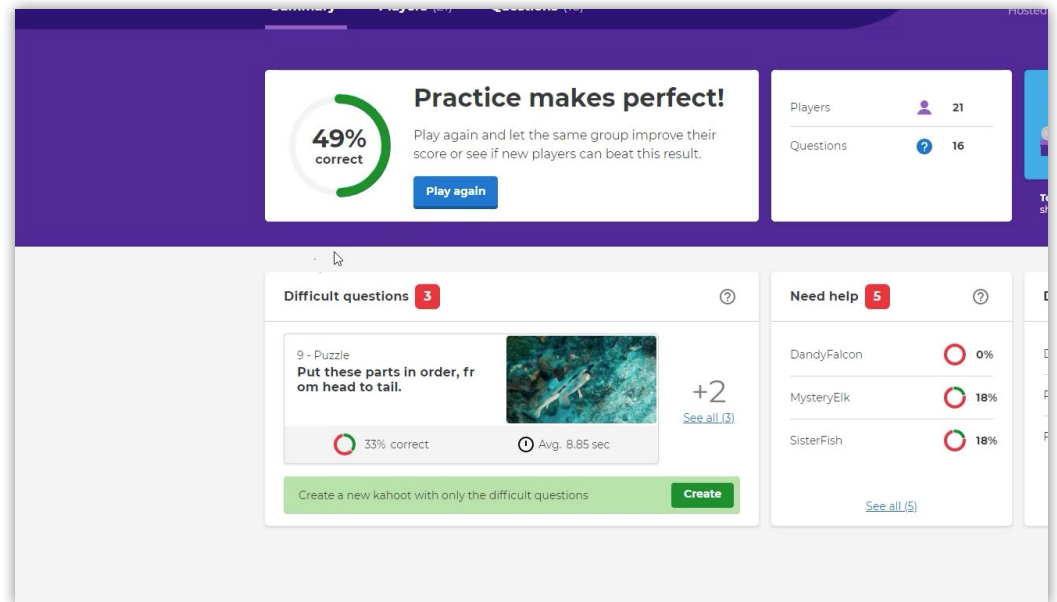
Kahoot! reports provide a more accessible and visual overview of analytics, as well as presenting various insights in a neat, visual way.

First, check the correct **overall** percentage. If it's less than **80%** correct, there should be room for improvement, so dig into the report further.

Next, dig into each question to find out where key challenges occur, under the **Difficult questions** section. Be sure to look at:

1. The correct overall percentage of the question
2. How long it took (in seconds) for students to answer

When you come across a question that was answered more incorrectly, immediately check to see if multiple students picked the **same wrong answer**. If they didn't, it could be that the wording of the answer options was confusing, or the students had a lapse in concentration. If they did pick the same wrong answer, dig in further.

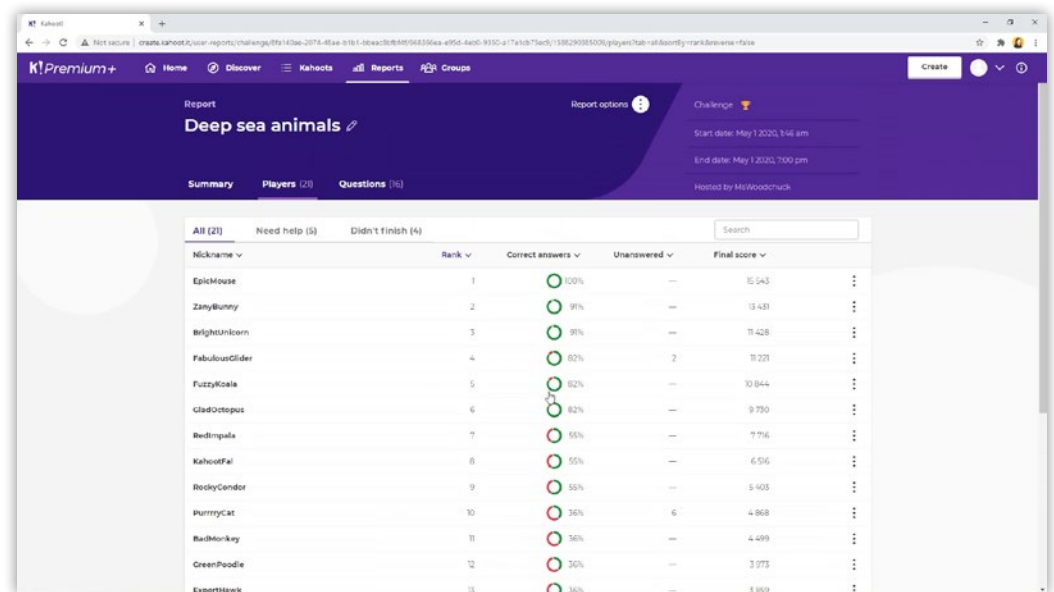


Kahoot! Certified for schools

Data-driven instruction

Don't be afraid to re-teach. Since the focus is not summative assessment, you should take advantage of the analytics you find in these reports and use it to your advantage when re-teaching, or building out further questions in a kahoot that test whether the issue is conceptual understanding or the structure of the question (as outlined previously). In just one click, you can even create a kahoot that contains just the questions that students found difficult. Click **Create** in the **Difficult question** section, and Kahoot! will instantly create a new kahoot with just the tricky questions. You can use this new kahoot to reinforce knowledge either in a live setting or by setting it as a student-paced challenge for your students to play at home.

You can get a quick overview of the students who struggled the most on the homepage of the report in the Need help section. Moreover, be sure to look at the **Player** tab. When you click on a player's nickname, you will see the exact questions they got wrong or right, what they answered, and how long it took them to answer. If they are answering faster than their peers and making errors, you may need to focus on their lack of attention. Yet, if other students are answering the same question easily, it could be they are lost and picking an answer at random. This is an opportunity to have a follow-up discussion with the student.



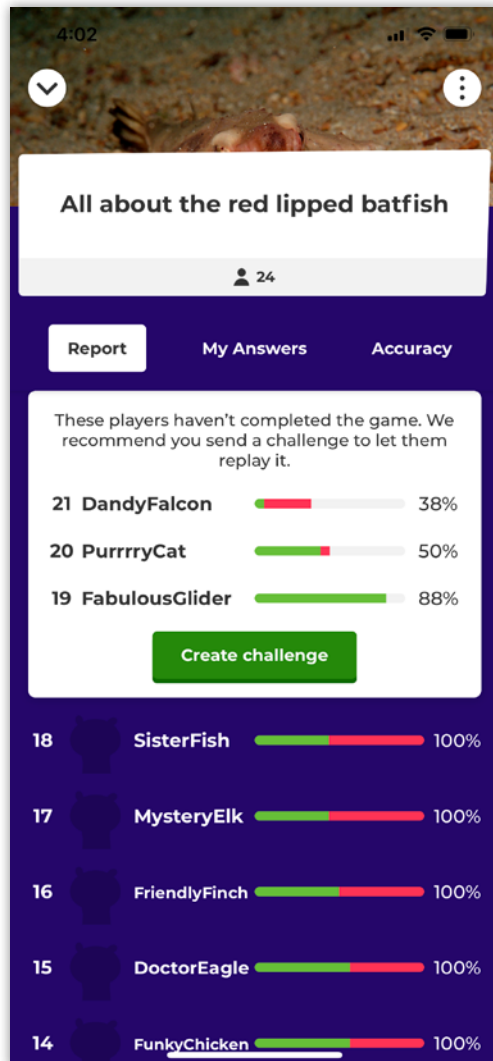
The screenshot shows the Kahoot! report interface for a quiz titled "Deep sea animals". The report is viewed from the "Players" tab, showing a list of 13 players with their performance metrics. The table includes columns for Nickname, Rank, Correct answers, Unanswered, and Final score. The data is as follows:

Nickname	Rank	Correct answers	Unanswered	Final score
EpicMouse	1	100%	—	10,543
ZanyBunny	2	90%	—	13,431
WightUnicorn	3	90%	—	11,428
FabulousGlider	4	82%	2	11,221
FuzzyKoala	5	82%	—	10,844
CladOctopus	6	82%	—	9,730
BedImpala	7	55%	—	7,716
KahootFal	8	55%	—	6,516
ReddyCandor	9	55%	—	5,403
PurrryCat	10	36%	6	4,868
BalMonkey	11	36%	—	4,489
GreenPoodle	12	30%	—	3,373
ExpertHawk	13	30%	—	3,889

When looking at analytics from questions you've adapted or are using for re-teaching, check the impact of testing your assumption as to why you think a certain wrong answer was chosen. You can continue this cycle of testing, making an assumption, looking at analytics, and re-teaching accordingly, to improve answers and ensure the intervention is effective.

Advanced reports in the app

With Kahoot! for schools, you can also access actionable insights from reports in our mobile app.

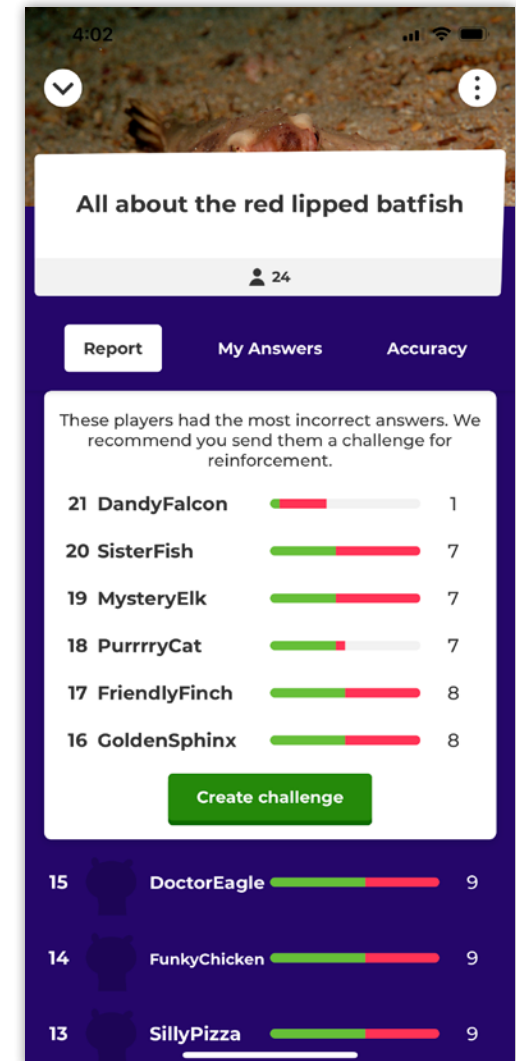


Incomplete challenges

This section is most relevant for student-paced challenges assigned as homework. Students may need a reminder if the challenge is still active, or it can show that the challenge might've been too difficult to complete in the time assigned.

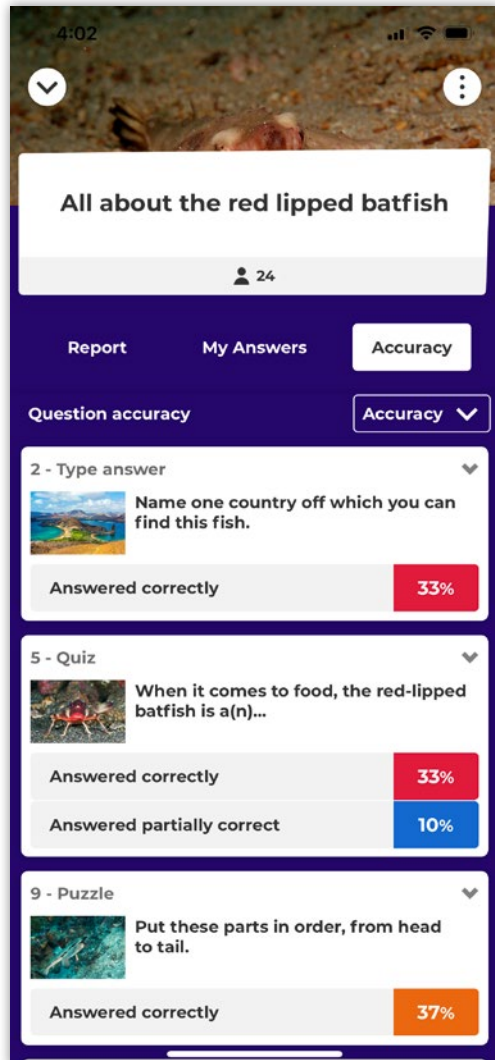
Prompts to follow up with students

If some participants got less than 30% answers correct, you'll receive a prompt to follow up with them. This will help with teacher intervention to understand why they were struggling - and if they got the answers incorrect for the same reason. Resending the student-paced challenge - with randomized answers - will help you understand if students have improved their understanding of the content.



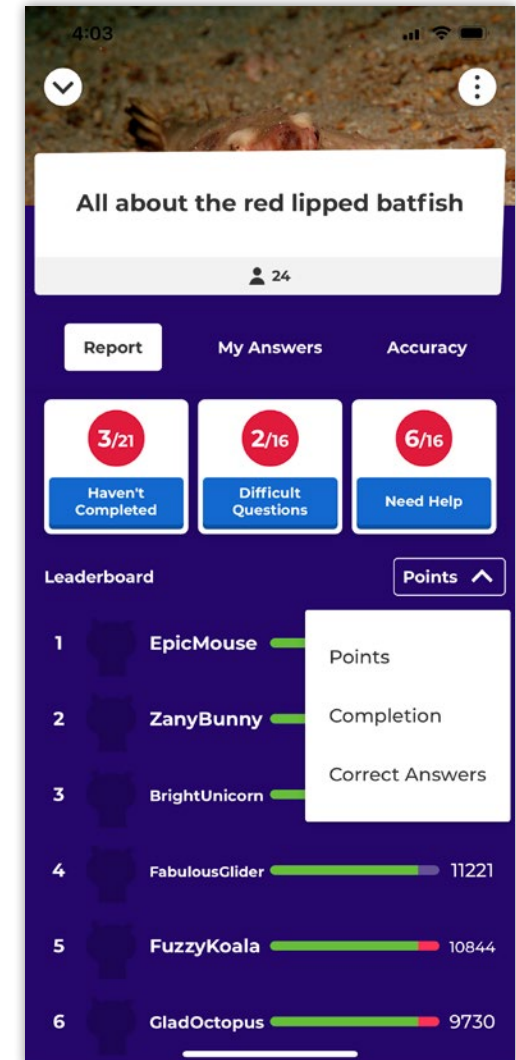
Advanced reports in the app

With Kahoot! for schools, you can also access actionable insights from reports in our mobile app.



Flag topics or questions for reteaching and formative assessment

The most difficult questions - i.e., the ones students struggled with most - are also flagged in the report. This helps identify which content areas as a whole students are challenged by and which areas need reteaching or reinforcement.

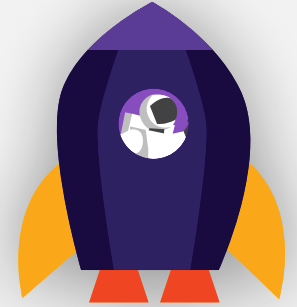


Leaderboard ranking

In the leaderboard section of the report, you can sort students by their scores, number of correct answers, or percentage of completion of a kahoot. This helps identify different areas of need clearly.



Kahoot!
Certified for
schools



Here ends the data-driven instruction course!

Here ends the data-driven instruction course in the Kahoot! Certified for schools - Advanced program. Once you're ready to take the assignment, you can find the challenge link on the Kahoot! certified for schools page, and follow the instructions.

In order to complete the course assignment, you'll need to download the Kahoot! app to your iOS or Android device. You can find it in the [App Store](#) or on [Google Play](#).

Here's a reminder of how to open a Kahoot! challenge with the assignment:

1. After downloading the Kahoot! app to your mobile device, **log in** to your Kahoot! account - we need this info to be able to send you your diploma and badge!
2. When prompted to open the assignment challenge, **click the URL** to open the challenge in-app, or enter the PIN manually
3. You'll then be able to **accept the challenge** and play the assignment, which is structured as a multiple-choice kahoot. You can do the assignment in short rounds, taking breaks in between, or all at once.