

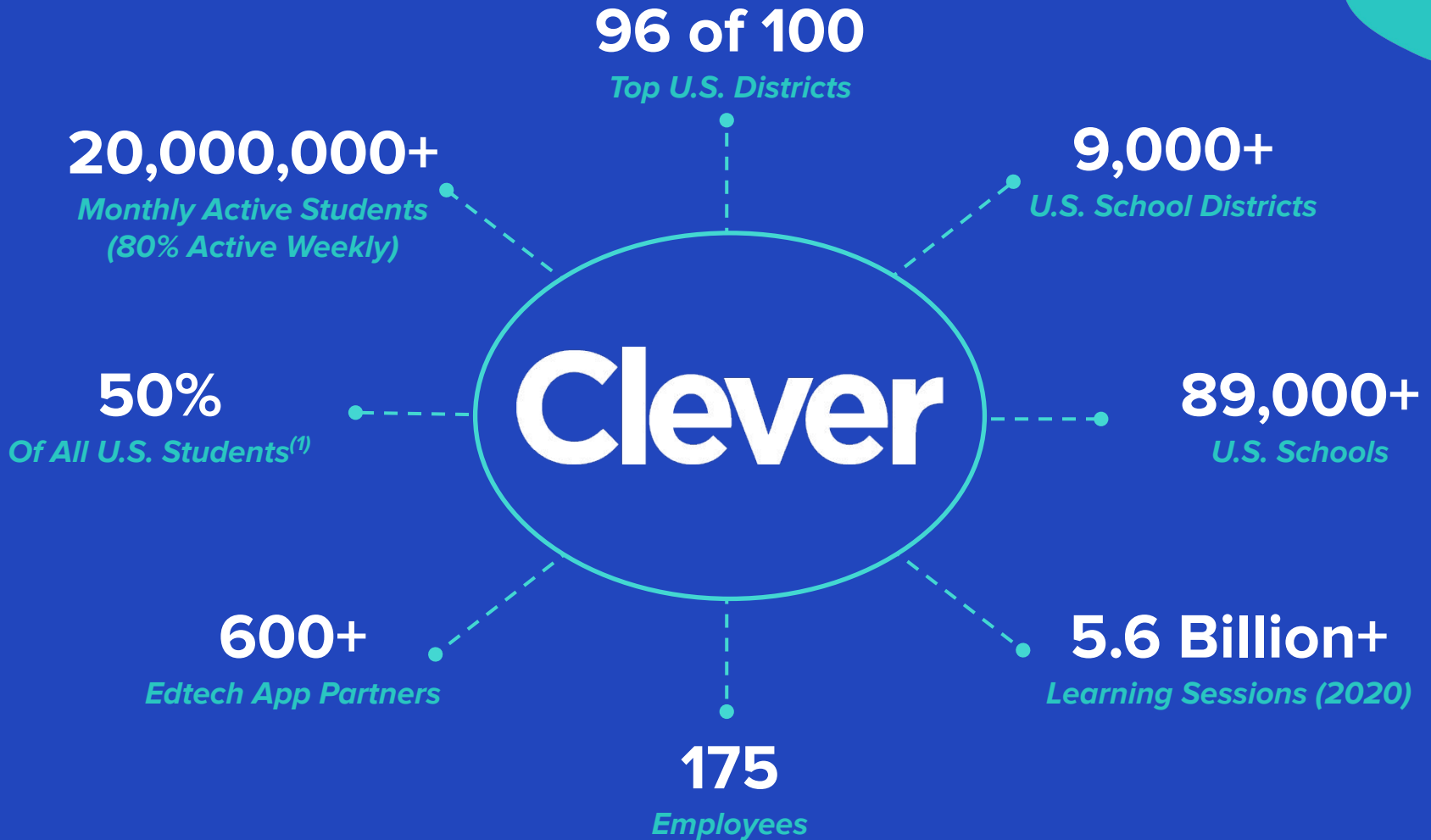
Clever

Introduction

MAY 2021







⁽¹⁾ Percentage of U.S. Students who were active on Clever in 2020.

The Problem: The More Edtech a School Used, the Bigger the Mess it Became

12-18 month
sales cycles

3-6 month
implementation
cycles

25% of class
periods
wasted
troubleshooting

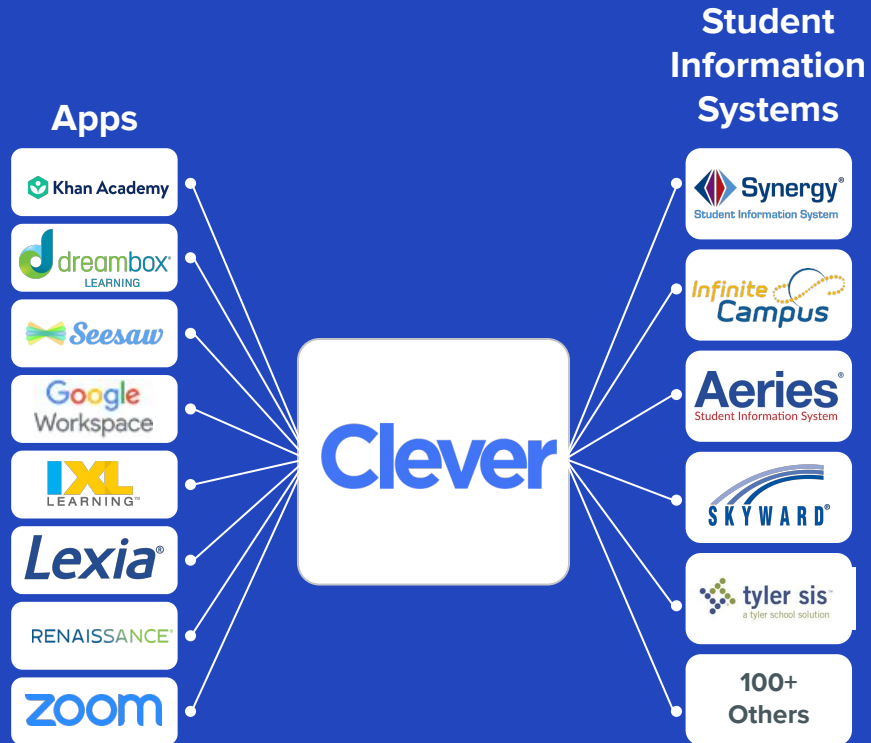
Schools spend **\$13B/year** on edtech and
70% of paid licenses are never even used once

Clever's APIs Make it Possible for Schools to Securely Integrate their Learning Software

The **Clever API** is the central hub between Apps and school databases

Helps schools securely connect with their preferred App providers

REST API relied on by 600+ Apps for identity and provisioning



On the Front End, Clever's Portal Has Become the Home Page for Student Learning

The image displays three overlapping screenshots of the Clever portal interface. The top screenshot shows the 'Teacher Pages' section with cards for Homeroom, Social Studies, Math Page, Period 2 - Science, Period 3 - Math, Period 4 - English, and District Page. The middle screenshot shows the 'Edtech Analytics' dashboard with filters for 'Last 28 days' and 'All Schools', and four data cards: 422 Total apps, 66 Clever Apps, 79 Library Apps, and 277 Other apps. The bottom screenshot shows a 'Messages' window with a conversation between Ms. Patty and Jasmine Wilcott, including a reminder about an essay and a response from the parent.

Teacher Pages

- Homeroom**: Only visible to you, 0 Resources
- Social Studies**: Only visible to you, 0 Resources
- Math Page**: Shared with 2 sections, 2 Resources
- Period 2 - Science**: Shared with 2 sections, 7 Resources
- Period 3 - Math**: Shared with 1 section, 11 Resources
- Period 4 - English**: Shared with 1 section, 27 Resources
- District Page**: Shared by your district, 18 Resources

Edtech Analytics

Last 28 days

SCHOOL: All Schools

STUDENT GRADE: All grades and teachers

- 422 Total apps
- 66 Clever Apps (Added by the district)
- 79 Library Apps (Added by teachers)
- 277 Other apps (Including any web links)

Today's Apps

- Code.org (DISTRICT)
- Duolingo (DISTRICT)
- Explain Everything Whiteboard
- Powtoon
- PowerMyLearning Connect (DISTRICT)
- Elastic
- CK-12 Foundation (DISTRICT)

Resources added by you

- Cinemotograp here
- Common Sense Education
- SchoolTube
- Powtoon
- U.S. Cinematograp hers Society
- Explain Everything Whiteboard
- e-hal pass

Messages

Ms. Patty

Students | Parents

Jasmine Wilcott

Hi Jasmine, please help Will with his essay tonight, it's due tomorrow at 11am.

Thanks for the reminder Ms. Patty! Should he submit the essay via Google classroom?

Yes! That's correct

Message Jasmine Wilcott

Clever SSO is used by over 20M students and 1.2M teachers every month

Clever's B2B App Customers Help Make Clever Free to School Districts

App Developers
(Clever is paid by 400+ top apps)



Clever

(477K+ School/App Connections)

Clever is 100% free to schools

App Developers pay to be integrated and deployed into Clever's network of schools

Clever charges App Developers a per-school rate based on how many schools the App connects to

Schools

(89K+ schools, 9K+ districts)



Including 96 of the largest 100 school districts in the U.S.

Our Brand Strength and Awareness is Unique

Clever

A leading brand in K12 education



Secure

The edtech leader in security and privacy



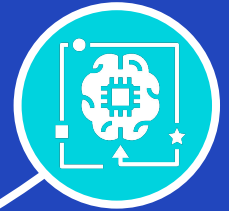
Trusted

Vetted by school districts, treasured by teachers, loved by parents



Easy

Bringing all of edtech together in one place, eliminating headaches



Smart

Inventing new approaches to digital learning from Badges to the Library

Thank you.

For more information, visit:

 Clever.com

 [@Clever](https://twitter.com/Clever)

 Facebook.com/Clever

Clever

